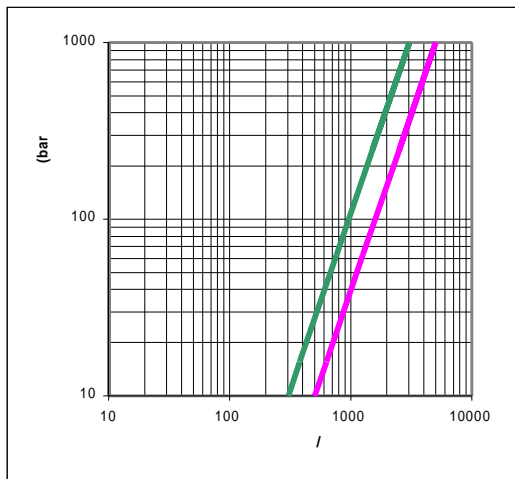
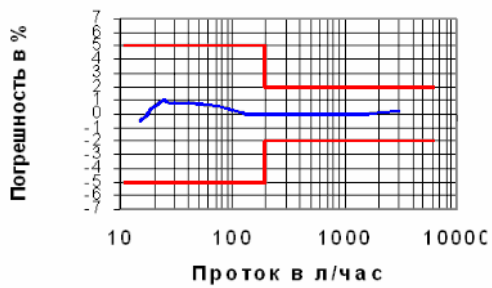




## SCAMPY

**Типичная кривая погрешности**



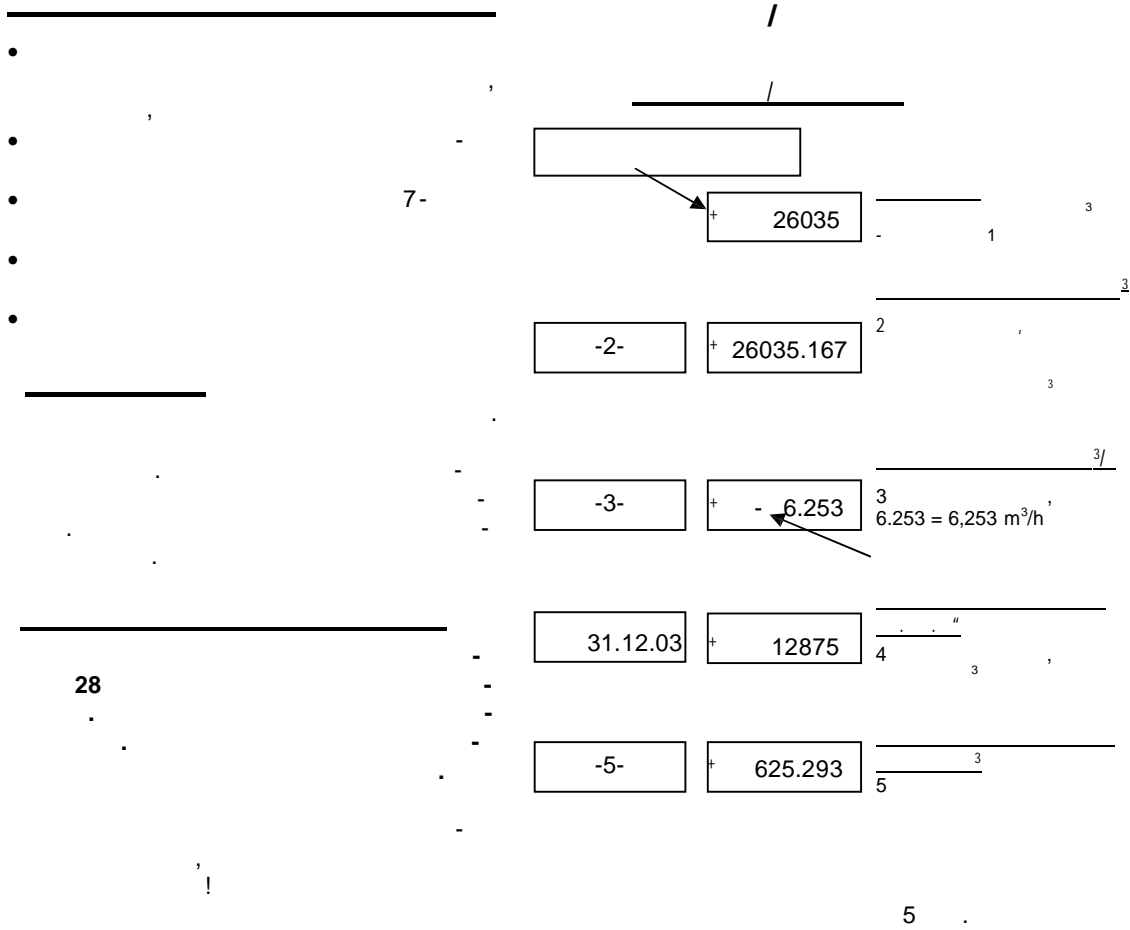
- 30 °C
- 90 °C
- 
- 

- < 3 /
- : 1,5
- 
- 

- M-Bus
- M-Bus
- 
- PTB
- EO (PTB-A 6.1, PTB- A 6.3) : A;B;C
- (Qmin/Qn 1:100)
- /
- 000
- r

- 12
- 
- LCD 10 ( )
- 

- M-Bus-
- 
-



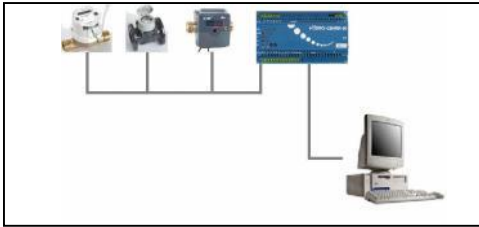
M-Bus. SCAMPY 31.12.XX.

M-Bus M-Bus - 10

- HYDRO-SET M-Bus : 25, 60 250 2 MByte Repeater
- HYDRO-CENTER M-Bus (RS 232), (RS 232) Client-Server Architektur ( )
- HYDRO-NET SQL

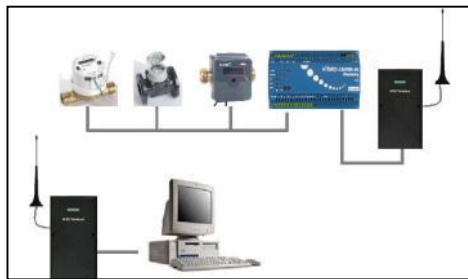
			1,5	
		Qmax	3	3/
		Qn	1,5	3/
		Qmin	15	/
	Qn	$\Delta p$	243	.
	0,1		930	/
	1		3.050	/
			< 3	/
			6	/
		PN	10	
			R ½	
		DN	15	
			110 / G¾ B	/
			95	
			IP 65	
	M-Bus		IP 44	
			800	

. 1:



M-Bus CENTER HYDRO-CENTER  
HYDRO-NET

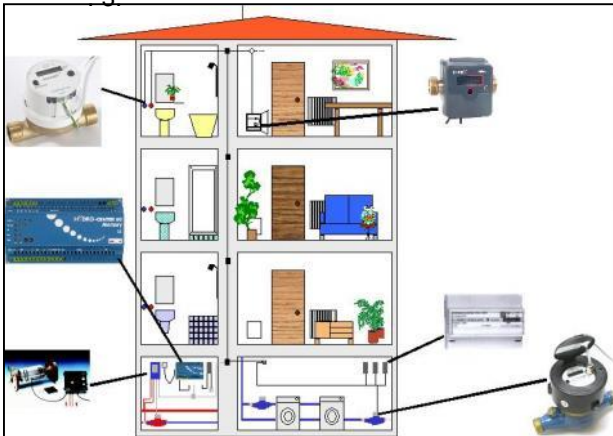
. 2:



M-Bus HYDRO-CENTER

( GSM ) LAN-

. 3:





M-Bus HYDRO-CENTER


( GSM ) LAN-

# ГҮДРОМЕТР

742/743

	-					
	1		520287			

	-					
	1		803361			

	-					
	1		520593			

:

			Qn/DN	PN			M-Bus
742	M-MKF3MB		Qn 1,5	16	bis 30°C	. B	74200033
743	M-MKF3MB		Qn 1,5	16	bis 90°C	. B	74300016